



Malawi Government

2018 Malawi Population and Housing

# Census

Migration Report

National Statistical Office  
July 2020

**National Statistical Office  
P.O. Box 333  
Zomba  
Malawi  
Telephone: +265 1 524 377  
Fax: +265 1 525 130**

**E- mail: [enquiries@nso.gov.mw](mailto:enquiries@nso.gov.mw)  
Website: [www.nso.malawi.mw](http://www.nso.malawi.mw)**

## **FOREWORD**



Following the successful implementation of the 2018 Malawi Population and Housing Census (PHC) and subsequent production of both preliminary and main reports, Malawi Government through the National Statistical Office (NSO) has produced 17 thematic reports. The reports have profiled demographic, social and economic sectors of the country. This effort is in line with the United Nations (UN) international standards of releasing main census results, and thematic reports thereafter to present decennial findings across all sectors that were captured during the census. I am contented, therefore, to note that Malawi Government has fulfilled this requirement by producing up-to-date and standard thematic reports to inform various government ministries to guide development efforts in the country.

The 17 thematic reports form a primary source of socio-economic and demographic data at various levels and provide the country with important information to foster national development, good governance and decentralization. The results presented in each thematic report will form a solid basis against which the successes and challenges in the implementation of the third Malawi Growth and Development Strategy (MGDS III) and the Sustainable Development Goals (SDGs) will be monitored and evaluated. As government started implementing its MGDS III in 2017, it is imperative to have clear indicators under each sector that shall be meaningfully assessed around 2022, the end of the MGDS III. I am delighted to note that the thematic reports serve that purpose and will help guide our national development plan.

I am fully aware that for the government to produce reports of such high quality there was a dedicated team of experts from NSO and other sectors. I would, therefore, like to appreciate the effort of the Commissioner of Statistics, NSO staff and experts from other institutions for producing this report. I would also like to appreciate the support received from development partners and individuals during the whole process of writing the thematic reports. Specifically, I wish to thank the United Nations Population Fund (UNFPA) for providing financial and technical assistance and coordinating all development partners. I wish to also thank British Department for International Development (DFID), United States Agency for International Development (USAID), the Norwegian Government, Deutsche Gesellschaft für Internationale Zusammenarbeit (GIZ) from the German Government, the Irish Aid from the Irish Government, Iceland Government, the Peoples' Republic of China, the UN Family and the Standard Bank Malawi for providing financial and material resources for the 2018 PHC from which these reports have derived. I would also like to thank US Census Bureau and Regional Centre for Mapping of Resources for Development (RCMRD) for providing technical support.

**Cliff Chiunda**

**Secretary to the Treasury**

## PREFACE



The Malawi Government through the National Statistical Office (NSO) conducted its sixth Population and Housing Census (PHC) in September 2018. The 2018 PHC was the first one to be conducted using Computer Assisted Personal Interviewing (CAPI) program. Data was collected and captured on tablets and transmitted to NSO server electronically via internet. The process proved to be efficient as it reduced time for data processing and cleaning since these processes were mostly done at data capturing stage. The preliminary and main reports were produced in a record time of 3 and 7 months respectively.

National Statistical Office has developed 17 Thematic Reports aimed at digging deeper into the large census data sets to better understand Malawi's social economic profile. This Thematic Report on Migration is one of them, others being: Assessment of Age Sex Data Quality; Spatial Distribution of Population including Urbanization; Fertility and Nuptiality; Mortality; Economic Characteristics of the Population; Migration; Water and Sanitation; Households and Living Conditions; Children and Youth; Gender; Characteristics of Older Persons; Disability; Education; Social Atlas; Population Projections; Implementation and Methodology and the Master Sampling Frame. The Thematic Reports were written by officers from NSO, lecturers from the University of Malawi, Subject matter specialists from different Ministries, Civil Society and the UN Family with technical support from US Census Bureau.

NSO would like to acknowledge the support it received from the Government, Development Partners, the Private Sector and individuals for the census including the production of 17 thematic reports. Specifically, NSO wishes to thank UNFPA for providing funding, technical assistance and coordinating support from all Development Partners under pooled funding. The office also wishes to thank DFID, USAID, the Norwegian Government, GIZ, the Irish Aid, Iceland Government, the Peoples' Republic of China, the UN Family and the Standard Bank Malawi for providing financial resources for the exercise.

NSO is heavily indebted to all its staff, Zone Managers, District Supervisors, Control Centre Supervisors, Field Supervisors and Enumerators for their dedication and hard work during the 2018 PHC. Special thanks are extended to US Census Bureau and Regional Centre for Mapping of Resources for Development (RCMRD) for the technical assistance they rendered. The office would also like to thank community leaders for mobilizing their members to be counted, and members of the general public for their willingness to participate in the Census.

Mercy Kanyuka (Mrs.)  
**Commissioner of Statistics**

## **EXECUTIVE SUMMARY**

NSO has established that the Central region remains the highest net gainer of lifetime migrants, whereas the Southern regions remains the highest net loser of internal lifetime migrants. At district level Lilongwe city, tops the list of net gainers whereas Zomba city tops the list of net losers. This pattern is observed for both males and females in these districts. It is observed that lifetime inflow of migrants to cities remains highest for Lilongwe city and the lowest for the city of Zomba.

On current migration, the 2018 PHC shows that the Southern region remains the highest net gainer whereas the Central region remains a net loser of current migrants. At District level, topping the list of current migration net gain was Mzimba district, Lilongwe city became second. Chitipa topped the list of current migration net loser, Blantyre rural became second on the list of net losers, and a similar pattern as observed above is noted for the male migrants. Female migrants had a slightly different pattern on the districts of net gain and net loss.

On international migration, the highest number of current immigrants were from South Africa. The 2018 PHC recorded the highest number of male emigrants compared to females, of the emigrants the highest proportion was recorded for the age group 20-29. Southern region contributed the most to emigrants. At district level, Mangochi and Mzimba districts had the highest percentage of emigrants. Most Malawian emigrants went to South Africa.

## TABLE OF CONTENTS

FOREWORD .....	ii
PREFACE .....	iii
EXECUTIVE SUMMARY .....	iv
TABLE OF CONTENTS.....	v
LIST OF FIGURES .....	vii
LIST OF TABLES .....	viii
LIST OF ANNEX.....	ix
1 SOURCES AND QUALITY OF DATA.....	1
1.1 Introduction .....	1
1.2 Population and Housing Censuses .....	1
1.2.1 History of Censuses in Malawi.....	1
1.2.2 The 2018 Population and Housing Census .....	1
1.2.3 Quality of Census Data .....	2
2 MIGRATION DATA IN MALAWI .....	4
2.1 Importance of Migration Data.....	4
2.2 Sources of Migration Data .....	5
2.3 Challenges in Collecting Migration Data.....	5
3 INTERNAL MIGRATION .....	6
3.1 Basic Measures of Internal Migration.....	6
3.2 Lifetime Inter-District Migration in Malawi.....	6
3.3 Lifetime Migration Streams .....	10
3.4 Non-City to City Lifetime Migration .....	10
3.5 Current/Period Inter-District Migration .....	10
3.5.1 Current /Period Inter-District Migration Flows .....	10
4 INTERNATIONAL MIGRATION .....	13
4.1 Immigration.....	13
4.1.1 Current Immigration .....	13
4.1.2 Lifetime Immigrants .....	14
4.2 Emigration.....	15
4.2.1 Age and Sex Distribution of Emigrants .....	15
4.2.2 Emigrants by Origin.....	17

4.2.3	Emigrants Country of Destination .....	18
4.2.4	Emigrants by Activity Abroad .....	19
4.2.5	Sex Distribution of Emigrants by Activity Abroad .....	20
4.2.6	Emigrants by Year of Departure .....	21
ANNEXES	.....	22
REPORT AUTHORS	.....	33
REPORT REVIEWERS	.....	33

## LIST OF FIGURES

Figure 3.1: Lifetime net migration by region, Malawi 2018 .....	7
Figure 3.2: Top five net gainers and top five net losers, Malawi 2018 .....	8
Figure 3.3: Males top five net gainers and top five net losers lifetime migration, Malawi 2018...	9
Figure 3.4: Top five net gainers and top five net losers female lifetime migrants, Malawi 2018 ..	9
Figure 3.5: Net current migration by region and sex, Malawi 2018.....	11
Figure 3.6: Top five net gain and five net loser, Malawi 2018.....	11
Figure 3.7: Top five net gain and five net loser males, Malawi 2018 .....	12
Figure 3.8: Top five net gain and five net loser females, Malawi 2018 .....	12
Figure 4.1: Age sex distribution of emigrants, Malawi 2018 .....	16
Figure 4.2: Percentage distribution of emigrants by region, Malawi 2018 .....	17
Figure 4.3: Percentage distribution of emigrants by sex at regional level, Malawi 2018.....	17
Figure 4.4: Percentage distribution of emigrants by district, Malawi 2018.....	18
Figure 4.5 Emigrants by country of destination, Malawi 2018 .....	19
Figure 4.6 Percentage distribution of emigrants by activity abroad, Malawi 2018.....	20
Figure 4.7: Percentage distribution of emigrants' activity abroad by sex, Malawi 2018 .....	20
Figure 4.8: Emigrants last 10 years by sex, Malawi 2008-2017.....	21

## **LIST OF TABLES**

Table 3.1: Lifetime inflow of migrants to cities, Malawi 2018 .....	10
Table 4.1: Current immigrants, Malawi 2018.....	14
Table 4.2: Lifetime immigrants categorized by country of origin, Malawi 2018.....	15
Table 4.3: Age and sex distribution of emigrants, Malawi 2018.....	15

## LIST OF ANNEX

Table A. 1: Life Time Migration by Region and Districts, Malawi 2018 .....	22
Table A. 2: Percentage Life Time Migration by Region and Districts, Malawi 2018.....	23
Table A. 3: Male Life time migration, Malawi 2018.....	24
Table A. 4: Female Life time migration, Malawi 2018 .....	25
Table A. 5: Top 30 current migration streams, Malawi 2018.....	26
Table A. 6: Current migration by district, Malawi 2018 .....	27
Table A. 7: Male Current migration by district, Malawi 2018 .....	28
Table A. 8: Female Current migration by district, Malawi 2018.....	29
Table A. 9: Lifetime Migration streams and counter streams, Malawi 2018 .....	30

# 1 SOURCES AND QUALITY OF DATA

## 1.1 Introduction

For decades, Malawi has and still relies on the Population and Housing Censuses (PHC) as a major source of data for planning, monitoring and evaluation of its national and international development initiatives such as the Malawi Growth and Development Strategy III (MGDS III) and the Sustainable Development Goals (SDGs). The census data also facilitates intra and international comparisons of indicators over time and space. Other sources of vital statistics include; surveys, administrative records and civil registrations.

## 1.2 Population and Housing Censuses

### 1.2.1 History of Censuses in Malawi

Malawi has conducted censuses both prior to independence and after attaining independence in 1964. The first census was conducted in 1891 when Malawi was a British Protectorate. This was not a complete census because the population count completely excluded Africans and excluded the whole of the Northern region and a large part of the Central region. The second population census was conducted in 1901. Unlike the first census, the second census attempted to count Africans and other races. However, there is very little information regarding these first two censuses. In 1911 an estimate of the entire population was achieved following the inclusion of the northern Ngoni into the Nyasaland protectorate. Subsequently, other pre-independence censuses followed in 1921, 1926, 1931, and 1945. Censuses conducted between 1921 and 1931 were for people who permanently resided in an area and this was *de jure* in principle. The 1945 census enumerated those present at home on the night of the census making it a *de facto* census.

The first census that included extensive training of enumerators and complete demarcation of enumeration areas was carried out in 1966 after independence. Other subsequent censuses which were all *de facto* followed in 1977, 1987 and 1998. The 2008 and 2018 PHC were both *de jure* and *de facto*. Unlike the previous censuses which used a paper-based questionnaire, 2018 Malawi Population and Housing Census used Computer Assisted Personal Interviewing (CAPI) for collecting data from households. The technology significantly reduced the data capture and analysis period compared to previous censuses.

### 1.2.2 The 2018 Population and Housing Census

The 2018 Population and Housing Census is the sixth in the post-independence period and is part of the United Nations 2020 World Round of Censuses. The 2018 census enumeration was conducted for three weeks, from 3rd to 23rd September, 2018. Enumerators were deployed to cover the entire country and administered the questionnaire to the household head or any

knowledgeable member in regular households. Data was also collected from individuals in institutions and homeless individuals, including street kids.

The 2018 PHC collected census attributes such as sex, age, place of birth and residence, parental survivorship, education and literacy status, employment status and industry, marital status, children ever born and children surviving, household amenities and assets, housing conditions, business ownership, disability, deaths, emigrants and albinism.

### **1.2.3 Quality of Census Data**

Quality is one of the most important aspects of data as it enhances credibility and increases its potential use. Credible data is vital for effective planning, policy formulation and decision making. A population and housing census is a huge undertaking that requires proper planning and implementation to ensure that the data collected is of high quality and reliable. According to the UN Principles and Recommendations for conducting a Population and Housing Census, a good PHC must have essential features which include: individual enumeration, universality within a defined territory, simultaneity, defined periodicity and small area statistics. NSO made sure that all these attributes of a good PHC are adhered to. These attributes give rise to two distinct properties of a census namely, content and coverage errors. Coverage errors arise from omissions or duplication of the population while content errors are deficiencies in the data arising from incorrect reporting by respondent or incorrect recording and tabulation by the census team. Great effort was taken to get rid of coverage and content errors

In planning for the 2018 Population and Housing Census, lessons from previous censuses were considered. Efforts were made and strategies were instituted to collect high quality data and reduce errors arising from the use of poor maps, untested methodologies and instruments, inadequate supervision, poor training, inadequate support from general public and inadequacies in data processing. The National Statistical Office (NSO) took the following steps to ensure quality data was collected:

- Updating the administrative units and demarcating the country into enumeration areas to ensure complete coverage thus avoiding omissions or double counting during the enumeration exercise using Geographic Information System (GIS) and satellite imagery. This was the first time Malawi used satellite maps in the census enumeration.
- Developing census questionnaires through a consultative process with government ministries and departments, the private sector, university and research institutions, supporting partners and the general public.
- Preparing comprehensive supervisors' and enumerators' instruction manuals for guidance during the census training and enumeration.
- Pre-testing the questionnaire to correct any deficiencies.
- Piloting the census as a rehearsal of the main census.
- Providing adequate training of field staff at all levels of operations.

- Intensive supervision at all levels: one Field supervisor to five Enumerators, one Control Centre Supervisor to 8 Field Supervisors, 2 District Supervisors per census district, 12 Census Zone Supervisors and 1 National Supervisor.
- Providing a comprehensive census advocacy using all channels such as media (print electronic and social), faith based organisations, community leaders and face to face publicity.
- Real time monitoring of census progress using a dashboard, checking and verifying completeness of coverage once the enumeration area was completed.

## 2 MIGRATION DATA IN MALAWI

### **Definitions**

<b><i>Migration:</i></b>	Movement of an individual or groups of people from place of usual residence to a destination with a duration of stay lasting for at least 6 months in the new area of residence.
<b><i>Usual residence:</i></b>	Place at which the person has lived continuously for at least six months not including temporary absences for holidays or work assignments
<b><i>Internal migration:</i></b>	Movement of people crossing geographical divisions within a country
<b><i>International migration:</i></b>	Movement of people across international borders.
<b><i>Outmigration:</i></b>	Movement of a person from one administrative area to another within a country

### 2.1 Importance of Migration Data

Statistics on migration, internal or international, are useful for the analysis of the size, the characteristics of migrants, the direction of movement, and the impact migration has on migrants themselves and host and origin societies. Furthermore, migration is one of the important inputs in preparing population projections, other inputs being fertility and mortality.

Migration data that provides details on migrants' places of departure and destination is useful in understanding the direction and volume of migration between different regions within a country or between countries. The direction of movement of migrants indicates areas or countries that are attractive or avoided. Many people are more likely to migrate to areas or countries that have good prospects and leave areas or countries perceived to have limited opportunities or hostile conditions. Migration data permits an analysis of the consequences of migration on the size and composition of the populations of areas of origin and destination. The population size of a destination area increases because of the arrival of migrants and reduces when some people migrate away from the area. The demographic and socioeconomic composition of the origin and destination populations also change depending on migrant background characteristics. Males and young people are more likely to migrate than females or people in other age groups. Thus, destination areas are likely to experience an increase in the population of young people and an increase in sex ratio. In addition to its immediate impact of population, migration affects nuptiality, fertility and mortality in both origin and destination areas.

All countries in the world collect data on international migration. Data on emigrants helps a country to know the number of its citizens who are emigrating, their characteristics, and reasons for emigration and destination countries. On the other hand, data on immigration provides

information on the size of immigrant population, their countries of origin, their characteristics and the purpose of entry into the country. Data on flow of immigrants or emigrants permit analysis of streams in international migration.

Further, migration data form a basis for the analysis of the impact of migration on migrants' themselves and host and origin societies. Migration has socio-economic consequences on the migrants and to both origin and destination countries. Immigration departments rely on migration data to make decisions on naturalization of foreigners.

## **2.2 Sources of Migration Data**

Sources of migration data include censuses, surveys and administrative records (population registers, border crossing statistics). However, the census remains the major source of migration data in many developing countries including Malawi. The 2018 PHC collected data for direct and indirect measurement of migration. Three separate questions were asked to collect direct migration data. The head of households was asked a) place of birth, b) place of previous residence and c) duration of residence at current residence of household members.

## **2.3 Challenges in Collecting Migration Data**

The quality of migration data in censuses and surveys faces a number of challenges. Firstly, some respondents do not know actual places of birth of some household members. This results in misreporting or non-reporting of place of birth for some members of household. Secondly, answers to the place of birth question understate the volume of migration. People who lived outside their place-of-birth but had returned by the census date are non-migrants since place of birth equals place of enumeration. Thirdly, place of birth data assumes a migrant moves directly from area of birth to area of enumeration. However, in reality some people move out of their place of birth to another area before finally moving to places of enumeration. Fourth, some people consider places they have stayed at for many years as their places-of-birth.

Accurate responses to a question on duration of stay at current residence depends on ability of respondents to recall the time of migration of all members of the household.

There are also problems associated with the collection of data on emigration. Not all persons interviewed had full and correct information about household members who had emigrated. For households where all household members had emigrated, there was no person to report about the move.

### 3 INTERNAL MIGRATION

<b>Definitions</b>	
<i>Lifetime migrants</i>	People whose place of usual residence at the time of census is different from their place of birth
<i>Current migrants</i>	People who have migrated to the place of usual residence at census enumeration time during a given period
<i>Stock of migrants</i>	Total number of migrants living in a geographical area or country at a particular point in time
<i>Flow of migrants</i>	Total number of migrants entering or leaving an area over the course of a specific period.
<i>In Migration rate</i>	In migrants divided by total population per 1000 = $I/P \times 100$
<i>Out migration rate</i>	Out migrants divided by total population per 1000 = $O/P \times 100$
<i>Gross migration rate</i>	In migrants plus out migrants divided by total population per 100 = $(I+O)/P \times 100$
<i>Net Migration rate</i>	In migrants minus out migrants divided by total population per 100 = $(I-O)/P \times 100$
<i>Migration stream</i>	Group of people who depart from one location or country going to a common destination
<i>Migration Effectiveness</i>	Is a measure of the effect that migration has on population redistribution and is measured by Net Migrants divided by Gross Migrants = $(I-O)/(I+O)$

#### 3.1 Basic Measures of Internal Migration

Internal migration is the movement of people across administrative boundaries within a country. It is measured by the volume and rate of in and out migration and others such as, gross and net migration.

#### 3.2 Lifetime Inter-District Migration in Malawi

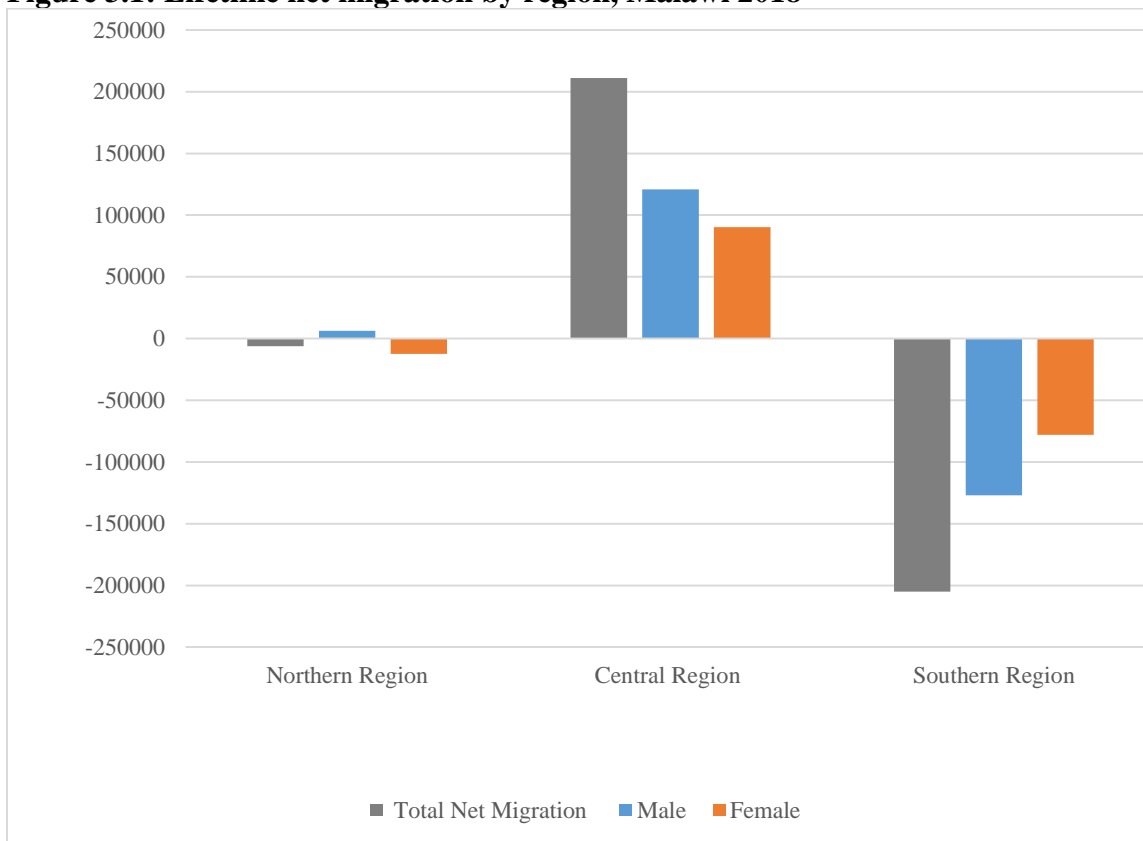
According to the present analysis, lifetime inter-district migration refers to migration that has occurred between birth and the time of the census within the country. A lifetime inter-district migrant is one whose current area of residence or district or city of current residence is different from the place or area of birth (district or city), regardless of intervening migration. Lifetime inter-district migration for an area may be described as either gross migration or net migration and oftentimes terms like lifetime in-migrant and lifetime out-migrant are used.

Table A. 1 presents the resident population enumerated in 2018 PHC by region, district and city. It also presents lifetime in-migrants, out-migrants, net migrants, gross migration, and migration

effectiveness. Northern region had net lifetime migrants of -6,131, Central region 211,147 and Southern region -205,016. The results indicate Central region as a net gainer of lifetime internal migrants, Northern and Southern regions are net losers of lifetime internal migrants, the pattern in net migration observed in 2018 is similar to the pattern observed in 2008 Census. Table A. 2 presents in migrants, out migrants, net migration and gross migration in relative terms.

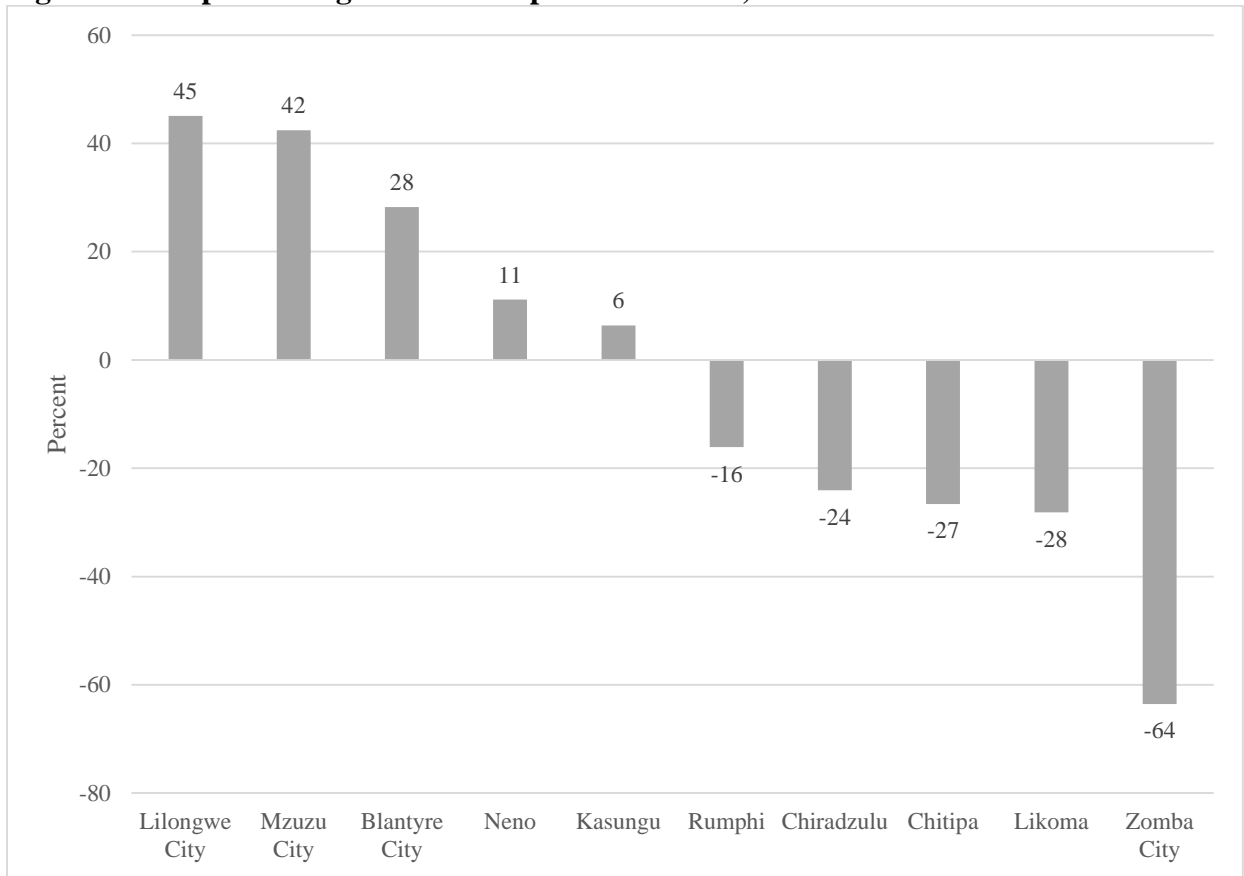
Figure 3.1 presents Lifetime migration by region and sex. Overall, central region remains the net gainer of total migrants, and gainer of net migration in the males and female categories. The Southern region remains net loser of migrant is total male and female.

**Figure 3.1: Lifetime net migration by region, Malawi 2018**



Source: 2018 Malawi Population and Housing Census

**Figure 3.2: Top five net gainers and top five net losers, Malawi 2018**

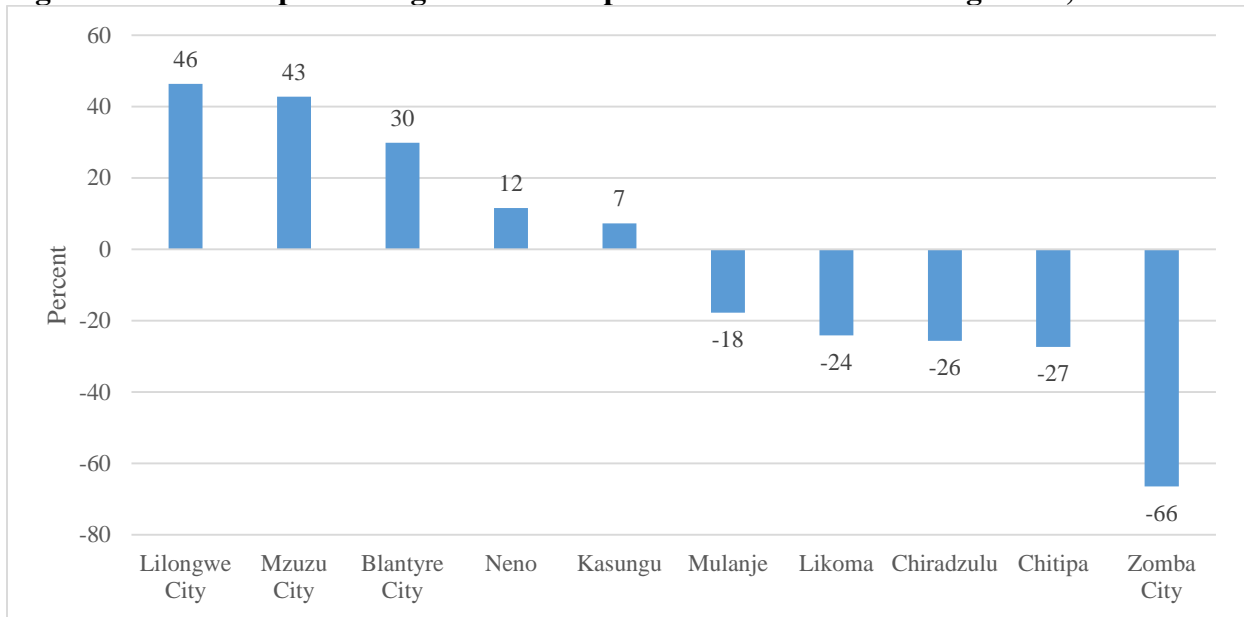


Source: 2018 Malawi Population and Housing Census

Figure 3.2 shows that the district with the highest net gain was Lilongwe city (45 percent). The figure shows that the three cities of Lilongwe, Mzuzu and Blantyre were among the top five net gainers. The city that had greatest loss of migrants is Zomba (64 percent).

Figure 3.3 presents the top five net gainers and top five net loser male lifetime migrants, proportion calculated as a percentage of the district population. Three cities of Lilongwe, Mzuzu and Blantyre were among the top five net gainers of male migrants, with Lilongwe having the highest net gain (46 percent). The city that had greatest loss of migrants is Zomba (66 percent).

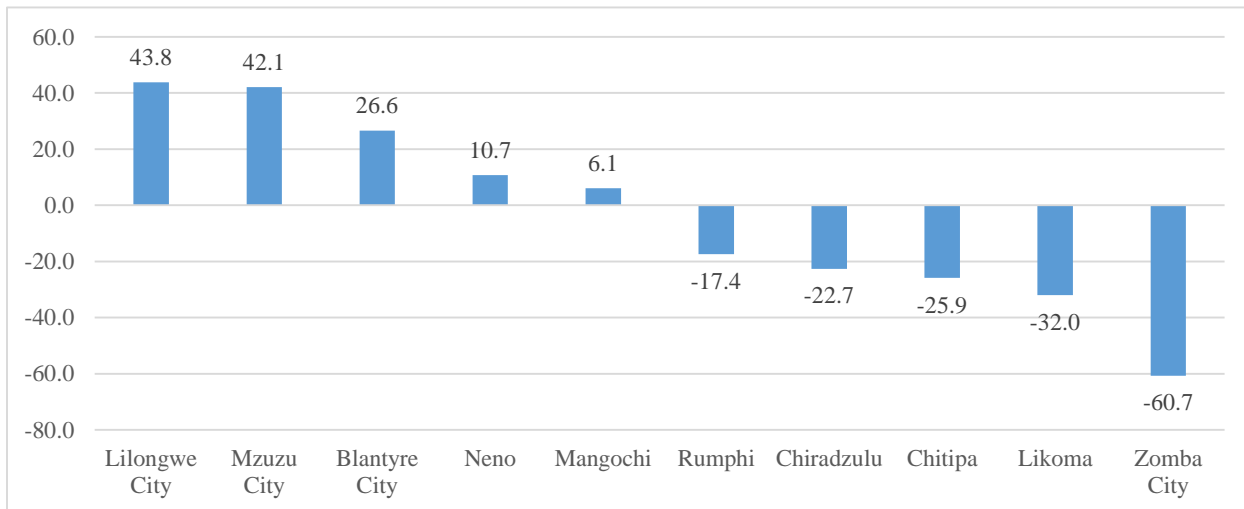
**Figure 3.3: Males top five net gainers and top five net losers lifetime migration, Malawi 2018**



Source: 2018 Malawi Population and Housing Census

Figure 3.4 presents the top five net gainers and top five net loser female lifetime migrants, proportion calculated as a percentage of the district population. The figure shows that the three cities of Lilongwe, Mzuzu and Blantyre were among the top five net gainers of female migrants, with Lilongwe having the highest net gain (43 percent). The city that had greatest loss of migrants is Zomba (61 percent).

**Figure 3.4: Top five net gainers and top five net losers female lifetime migrants, Malawi 2018**



Source: 2018 Malawi Population and Housing Census

### 3.3 Lifetime Migration Streams

Table A. 5: presents the top 30 streams. The largest lifetime migration stream in Malawi in 2018 is Thyolo to Blantyre city, Mulanje to Blantyre, Mzimba to Mzuzu city and Dedza to Lilongwe city. The top most migration streams observed in 2018 were also observed in the 2008 census

### 3.4 Non-City to City Lifetime Migration

In this section, non-city areas depict all the areas that do not fall within city boundaries. Figure 3.1 presents migration from non-city areas to the four cities in Malawi. Lilongwe city had the highest inflow of lifetime migrants, whilst Zomba city had the lowest inflow of lifetime migrants from areas not classified as cities.

**Table 3.1: Lifetime inflow of migrants to cities, Malawi 2018**

Lilongwe City	519,738
Blantyre City	366,307
Mzuzu City	128,633
Zomba City	44,760

*Source: 2018 Malawi Population and Housing Census*

### 3.5 Current/Period Inter-District Migration

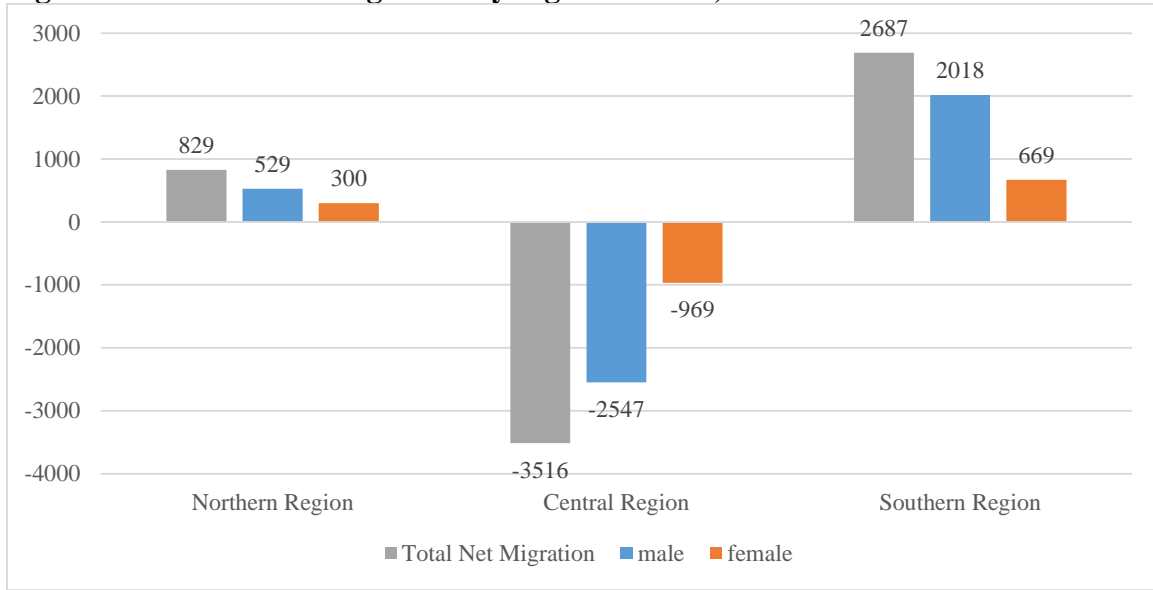
Estimation of current inter-district (“district” here means district or city) migration is based on information on place of previous residence to the year preceding the census and place of current residence. Inter district migration informs policy and program formulation at national level as well as for the districts of origin and destination.

#### 3.5.1 Current /Period Inter-District Migration Flows

Table A. 6 presents number of inter-district migrants by district of current residence and district of previous residence and summary migration statistics.

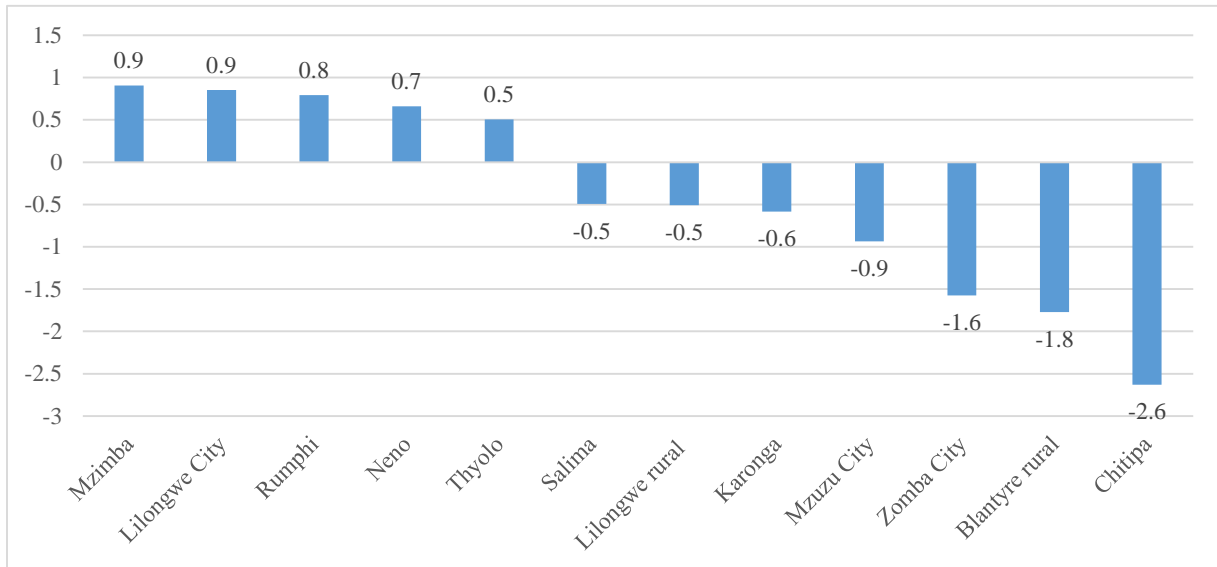
Figure 3.5 presents net current migration by region and sex. Southern region was the top net gainer of current migrants, total (2,687), males (2018) and female (669) categories. Central region was a net loser of migrants, total (-3516), male (-2547) and female (-969) categories. The pattern observed in 2018 was similar to the pattern in 2008.

**Figure 3.5: Net current migration by region and sex, Malawi 2018**



Source: 2018 Malawi Population and Housing Census

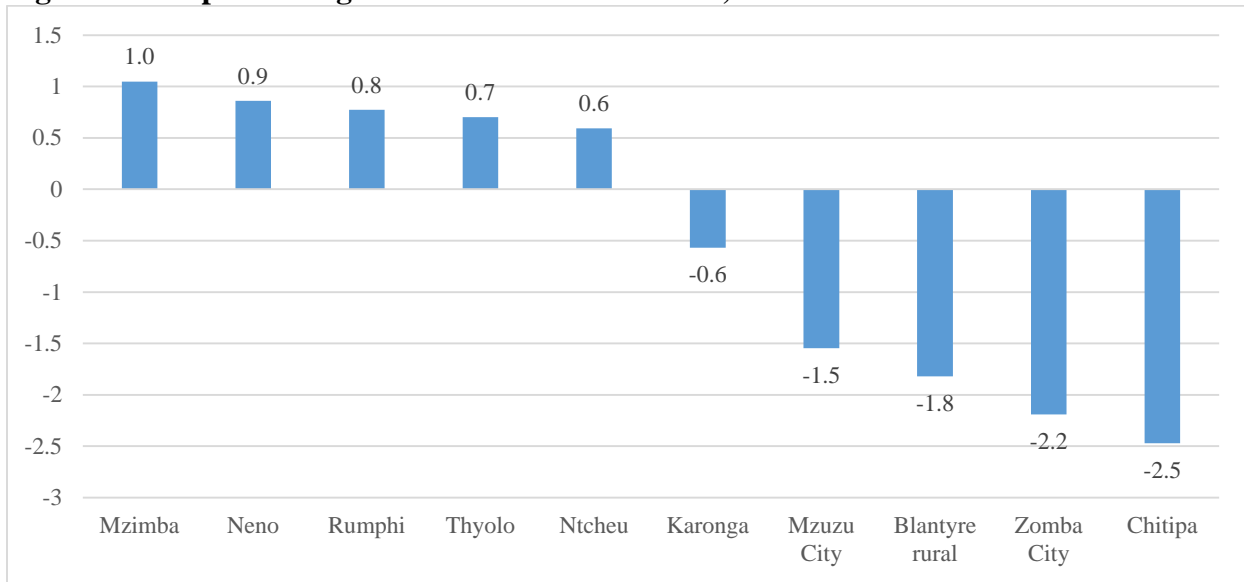
Figure 3.6 shows Mzimba was the highest net gainer of current migrants whereas Chitipa was the top loser. A similar pattern is observed in Figure 3.7 for the males. There was a variation in districts of net gain and net loss among the females (Figure 3.8).



**Figure 3.6: Top five net gain and five net loser, Malawi 2018**

Source: 2018 Malawi Population and Housing Census

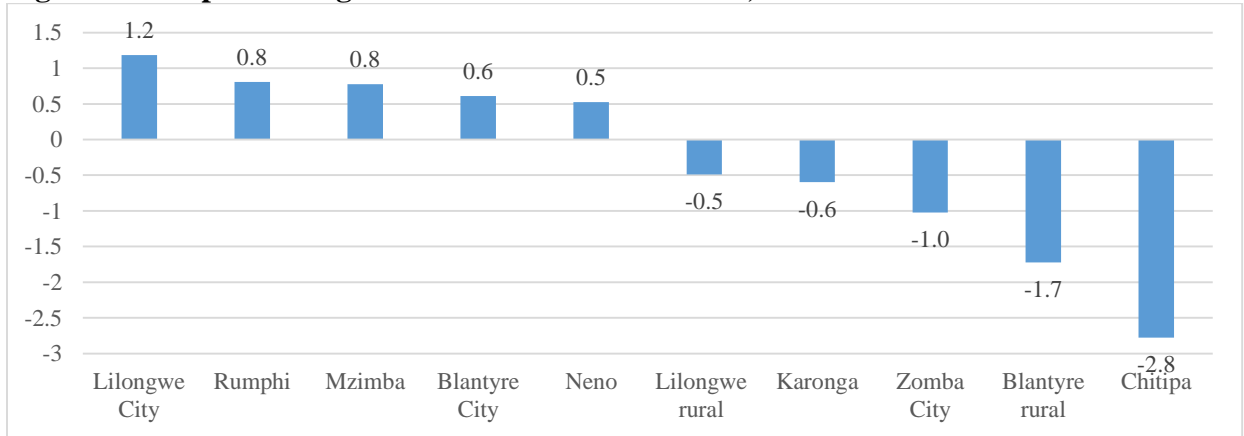
**Figure 3.7: Top five net gain and five net loser males, Malawi 2018**



Source: 2018 Malawi Population and Housing Census

Considering sex, Mzimba was the highest net gainer of current male migrants whereas Chitipa was the top loser, Figure 3.7. There were slight variations from the distribution of total current net migrants (Figure 3.8) across the districts.

**Figure 3.8: Top five net gain and five net loser females, Malawi 2018**



Source: 2018 Malawi Population and Housing Census

On the other hand, Lilongwe City was the highest net gainer of current female migrants whereas Chitipa was the top loser, Figure 3.8. Further variations from the distribution of total current net migrants (Figure 3.6) as well as male current net migrants (Figure 3.7) across the districts were observed.

## 4 INTERNATIONAL MIGRATION

### Definitions

*Immigration:* Is the movement of people into a country from other countries

*Emigration:* Is the movement of people from a country to other countries

*Lifetime migrants:* People whose place of usual residence at the time of census is different from their place of birth.

*Current migrants:* People who have migrated to the place of usual residence at census enumeration time during a given period. Reference has been made to a 12 months' period.

### 4.1 Immigration

#### 4.1.1 Current Immigration

The 2018 PHC recorded a total of 55,269 current immigrants which translates into 3 persons per every 1000 persons as current immigrants. The highest number of current immigrants were recorded in the Southern region (25,983), followed by Central region (16,542) then Northern region (12,744). In terms of origin, the highest number of current immigrants were from South Africa (28,140), representing 50.9 percent of the total current immigrants (Table 4.1) All countries with less than 50 have been grouped into "Other countries".

**Table 4.1: Current immigrants, Malawi 2018**

<b>Previous residence</b>	<b>Number</b>
South Africa	28,140
Mozambique	15,818
Zambia	5,035
Tanzania	2,142
Congo (Kinshasa)	1,134
Zimbabwe	466
India	264
Burundi	238
United States of America	204
United Kingdom	179
Congo (Brazzaville)	163
Botswana	138
China	122
Kenya	118
Rwanda	104
Sudan	50
Uganda	50
Other countries	904
<b>Total</b>	<b>55,269</b>

*Source: 2018 Malawi Population and Housing Census*

#### **4.1.2 Lifetime Immigrants**

Lifetime immigrants are those born in a different country and enumerated in the country. This analysis considered migration stocks in Malawi from different countries. The total number of lifetime immigrants has declined over the past 10 years. The 2018 Census recorded 143,996 lifetime immigrants against the 205,000 recorded in the 2008 census. The 2018 lifetime immigrants translate into 0.8 percent of the total population of Malawi.

Out of the 143,996 lifetime immigrants, 67,952 were males and 76,044 were females. The highest number of lifetime immigrants were recorded in the Central region (58,636), followed by Southern region (52,790) then Northern region (32,570). In terms of origin, the highest number of lifetime immigrants were from Mozambique (34,535), approximately 24 percent of the total foreign born population, Table 4.2. All countries with a total stock of less than 50 have been grouped into the category “Other”.

**Table 4.2: Lifetime immigrants categorized by country of origin, Malawi 2018**

Country of Birth	Number	Country of Birth	Number
Mozambique	34,535	Ethiopia	123
Zambia	30,465	American Samoa	92
Zimbabwe	25,617	Somalia	87
South Africa	13,477	Canada	87
Congo (Kinshasa)	12,585	British Indian Ocean Territory	84
Tanzania United Republic	7,628	Egypt	81
Burundi	3,853	Italy	78
India	3,720	Netherlands	76
Rwanda	3,188	Swaziland	75
Congo (Brazzaville)	2,304	Korea (South)	72
United Kingdom	1,071	Lebanon	66
Pakistan	911	Sudan	58
United States of America	446	Japan	57
Kenya	391	Portugal	57
Nigeria	330	Ireland	56
China	285	Ghana	55
Botswana	242	Australia	54
Uganda	218	Bangladesh	53
Sri Lanka	198	British Virgin Islands	50
Germany	152	Other	1,019
<b>Total</b>			<b>143,996</b>

Source: 2018 Malawi Population and Housing Census

## 4.2 Emigration

In the 2018 PHC, a module on emigration was incorporated. The module collected information on members of households who emigrated between 2008 and 2018 and who were still out of the country at the time of the census. Information on emigration was collected from the head of household or a well knowledgeable member of the household and included the sex, age, destination, year of departure, type of activity abroad and if any remittances were sent. It is important to note that the reported information may suffer from recall lapses by the respondent. Therefore, in explaining the trend in emigration during the period, caution must be exercised as the numbers (do not – may not) accurately measure the volume of emigration.

Overall, emigrants have increased over the past 10 years, 254,934 people have emigrated and never returned, which is higher than the 128,681 recorded emigrants in the 2008 Census.

### 4.2.1 Age and Sex Distribution of Emigrants

Table 4.3 Distribution of persons who emigrated from Malawi during the 2008 - 2018 period and were still abroad at the time of the census by age and sex.

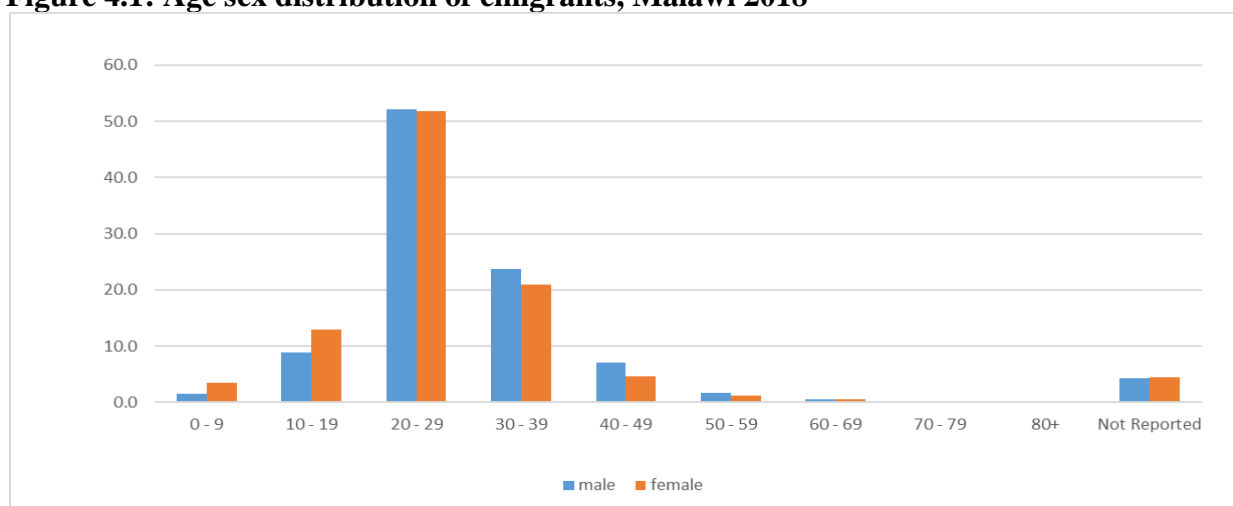
**Table 4.3: Age and sex distribution of emigrants, Malawi 2018**

Age Group	Both sexes	Male	Female	Sex Ratio
0 - 9	4,849	2,871	1,978	145
10 - 19	25,098	17,652	7,446	237
20 - 29	132,666	102,954	29,712	347
30 - 39	58,936	46,952	11,984	392
40 - 49	16,654	14,012	2,642	530
50 - 59	3,996	3,314	682	486
60 - 69	1,261	990	271	365
70 - 79	383	275	108	255
80+	166	117	49	239
Dont know	10,925	8,364	2,561	327
<b>Total</b>	<b>254,934</b>	<b>197,501</b>	<b>57,433</b>	<b>344</b>

Source: 2018 Malawi Population and Housing Census

The 2018 MPHHC recorded 254,934 emigrants, of this, 197,501 were males and 57,433 were females. This translates to 14.5 emigrants per 1,000 people. There were sex and age differences in the number of emigrants. Differences in sex have been depicted by the sex ratios in Table 4.3. Over the past 10 years, there were 344 males for every 100 female emigrants. The sex ratios range from 145 in age group 0-9 to 530 in age group 40 – 49. There are also variations in the distribution of emigrants by age. Figure 4.1 is a graphical representation of age and sex distribution of emigrants.

**Figure 4.1: Age sex distribution of emigrants, Malawi 2018**



Source: 2018 Malawi Population and Housing Census

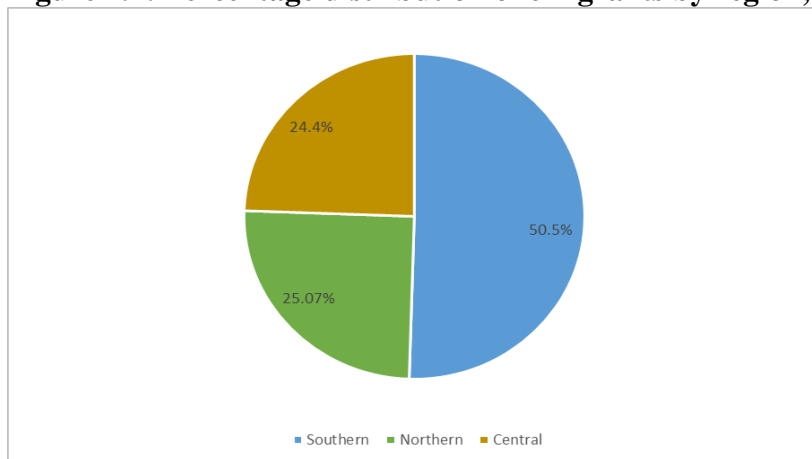
Most persons who have emigrated over the past 10 years are persons aged 20-29 years. The number of emigrants increases sharply with increasing age up to age group 20-29 and starts decreasing

onwards. The pattern is similar in both males and females. A similar pattern was observed in the 2008 PHC.

#### 4.2.2 Emigrants by Origin

Origin of emigrants has been analyzed by both region and district of origin.

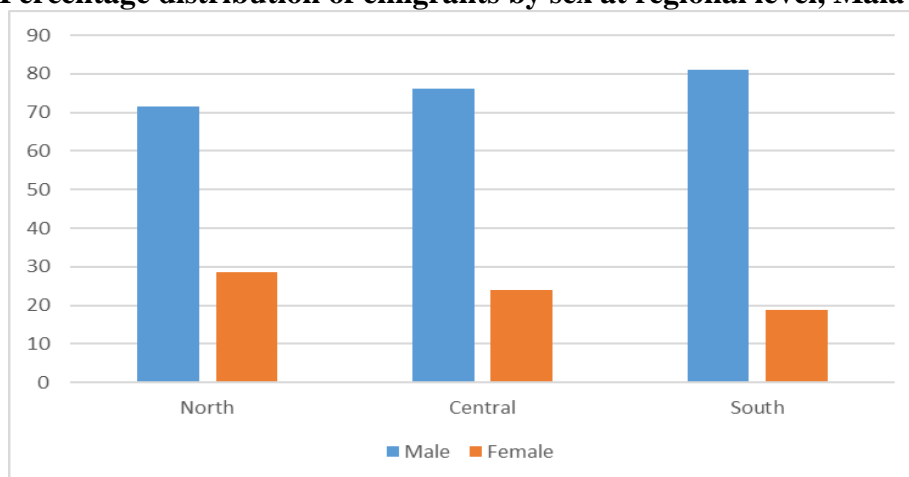
**Figure 4.2: Percentage distribution of emigrants by region, Malawi 2018**



*Source: 2018 Malawi Population and Housing Census*

On overall, Southern region has had the highest number of emigrants over the past 10 years (50.5 percent) (Figure 4.2).

**Figure 4.3: Percentage distribution of emigrants by sex at regional level, Malawi 2018**

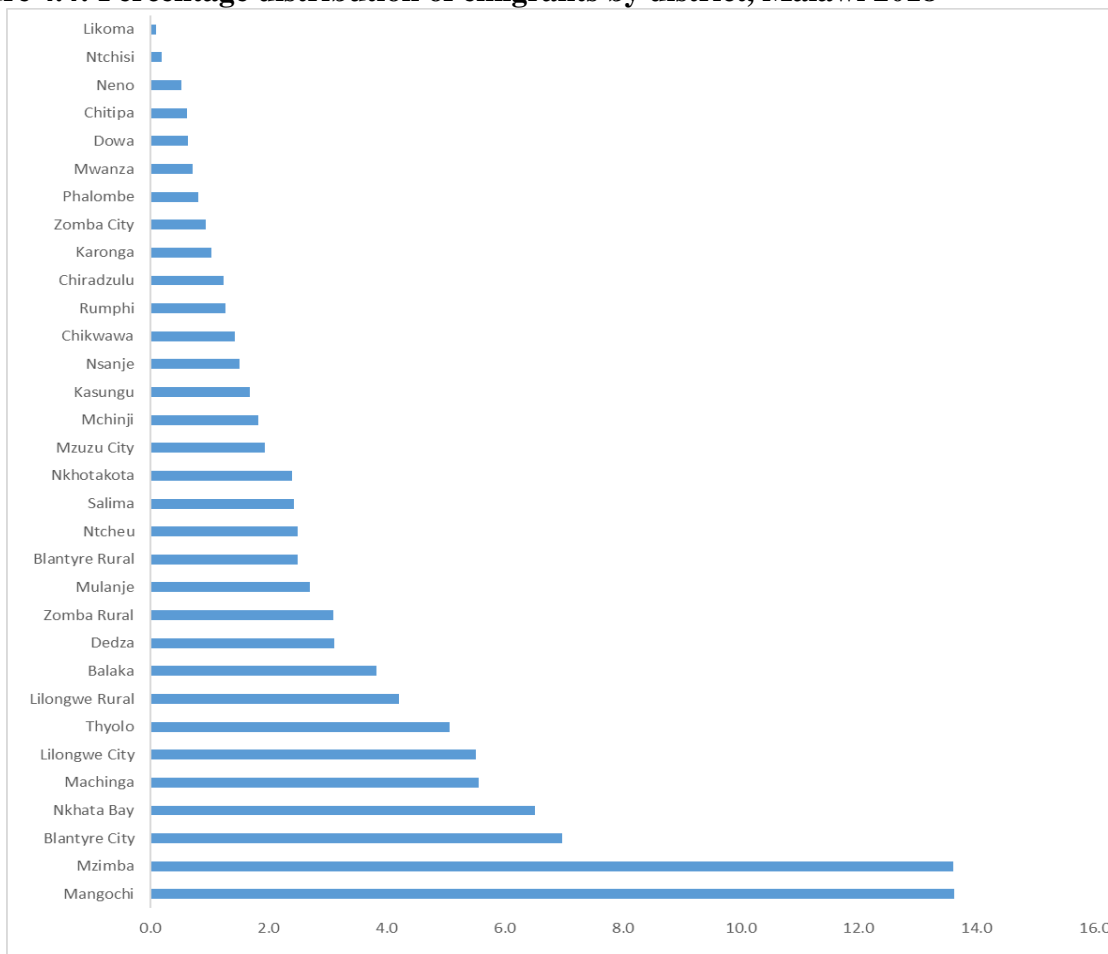


*Source: 2018 Malawi Population and Housing Census*

Looking at emigrants' region of origin and sex distribution for the past 10 years, there are two extremes. Male emigrants are highest in the South and lowest in the North. On the contrary, female emigrants are highest in the North and lowest in the South. Southern region had 81 percent of its

total emigrants as males and Northern region 72 percent, Figure 4.3. Northern region had 28 percent of its total emigrants as females and Southern region 19 percent (Figure 4.3).

**Figure 4.4: Percentage distribution of emigrants by district, Malawi 2018**



*Source: 2018 Malawi Population and Housing Census*

Mangochi and Mzimba districts had the highest percentage of emigrants (13.6 percent). On the contrary, Likoma had the lowest percentage of emigrants (0.1 percent).

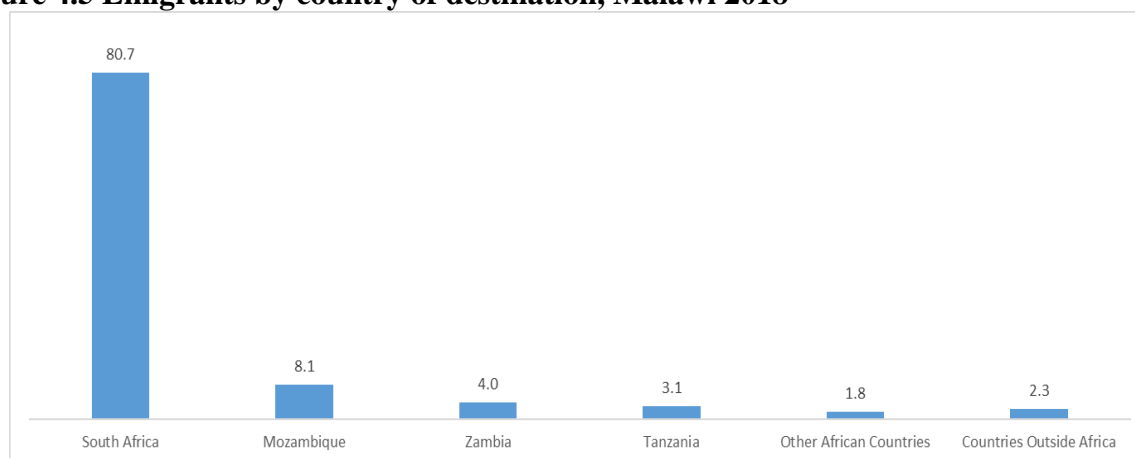
### 4.2.3 Emigrants Country of Destination

Analysis of emigrants by country of destination considered all neighboring countries, the Republic of South Africa (RSA) independently and clusters of countries namely; Other African Countries and Countries outside Africa.

The majority of the emigrants are in African countries at 97.3 percent (South Africa, Mozambique, Zambia, Tanzania and Other African countries). The remaining 2.3 percent are in countries outside Africa. Further, most Malawian emigrants are in South Africa (80.7 percent). We therefore

conclude that overall, most Malawians have emigrated to African countries and never returned. Figure 4.5 shows percentage of emigrants by country of destination.

**Figure 4.5 Emigrants by country of destination, Malawi 2018**



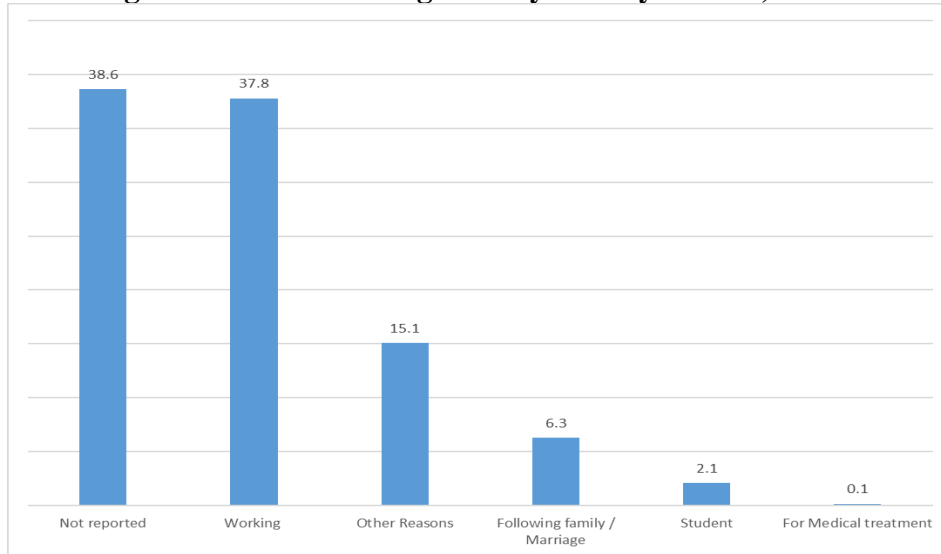
*Source: 2018 Malawi Population and Housing Census*

#### **4.2.4 Emigrants by Activity Abroad**

Of those Malawians who emigrated and never returned 37.8 percent were reported to be working abroad. The working cluster combined categories of working in mines, working in farms, domestic workers, shop assistants, official business and working in other sectors, 38.6 percent had no activity reported, 6.3 percent followed family or marriage, 2.1 percent were students, and 0.1 percent had gone for medical treatment (Figure 4.6).

Of the working (37.8 percent), the highest were those working in other sectors not classified (29.2 percent), followed by those working as shop assistants and as domestic workers (24.9 and 24 percent, respectively) and the lowest were those working in mines (2.7 percent).

**Figure 4.6 Percentage distribution of emigrants by activity abroad, Malawi 2018**

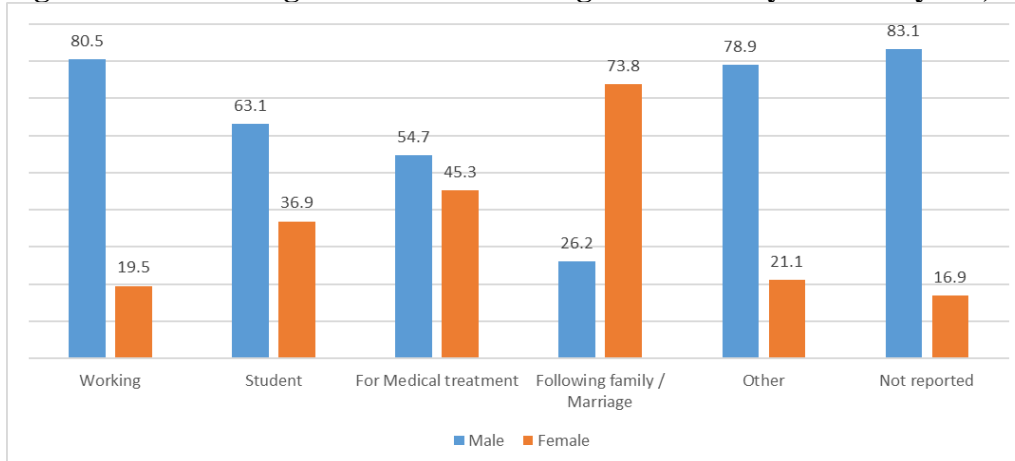


Source: 2018 Malawi Population and Housing Census

#### 4.2.5 Sex Distribution of Emigrants by Activity Abroad

Males dominated in all the activity categories except for the following family/marriage category where females dominated. Among known reported reasons of emigrating, males were highest in the working category (80.5 percent) and lowest in the following family/marriage category. However, females were highest in the following family/marriage category (73.8 percent). An overwhelming gap in sex distribution is observed in those following family or marriage (Figure 4.7).

**Figure 4.7: Percentage distribution of emigrants' activity abroad by sex, Malawi 2018**

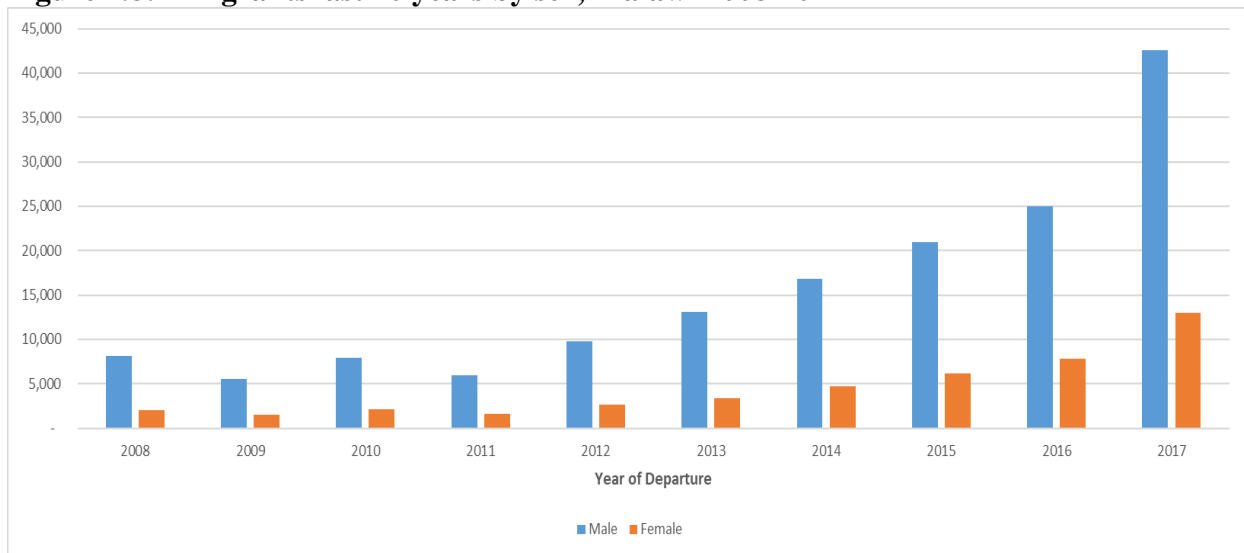


Source: 2018 Malawi Population and Housing Census

#### 4.2.6 Emigrants by Year of Departure

Between 2008 and 2011, the numbers of emigrants varied at a relatively low level. However, in 2012, the number of emigrants began increasing up to the year 2017. Note that since the census enumeration was in June 2018, 2018 counts have not been included in the graph as they are not complete and do not reflect full emigration for the year. In all the years, males dominate females as emigrants. Figure 4.8 shows emigrants in the last 10 years by sex.

**Figure 4.8: Emigrants last 10 years by sex, Malawi 2008-2017**



*Source: 2018 Malawi Population and Housing Census*

## ANNEXES

**Table A. 1: Life Time Migration by Region and Districts, Malawi 2018**

Region and District	Total	In migrants	Out migrants	Net migration	Gross migration	Migration Effectiveness
<b>Northern Region</b>	<b>2,289,780</b>	<b>441,668</b>	<b>447,799</b>	<b>-6,131</b>	<b>889,467</b>	<b>-0.7</b>
Chitipa	234,927	11,212	73,700	-62,488	84,912	-73.6
Karonga	365,028	37,569	53,412	-15,843	90,981	-17.4
Nkhata Bay	284,681	60,331	45,170	15,161	105,501	14.4
Rumphi	229,161	43,233	80,081	-36,848	123,314	-29.9
Mzimba	940,184	143,856	139,757	4,099	283,613	1.4
Likoma	14527	3,519	7604	-4,085	11,123	-36.7
Mzuzu City	221,272	141,948	48,075	93,873	190,023	49.4
<b>Central Region</b>	<b>7,523,340</b>	<b>1,433,328</b>	<b>1,222,181</b>	<b>211,147</b>	<b>2,655,509</b>	<b>8.0</b>
Kasungu	842,953	179,785	125,933	53,852	305,718	17.6
Nkhota kota	393,077	75,652	56,430	19,222	132,082	14.6
Ntchisi	317,069	35,686	53,814	-18,128	89,500	-20.3
Dowa	772,569	88,441	144,969	-56,528	233,410	-24.2
Salima	478,346	72,189	69,377	2,812	141,566	2.0
Lilongwe	1,637,583	155,640	294,168	-138,528	449,808	-30.8
Mchinji	602,305	83,111	59,675	23,436	142786	16.4
Dedza	830,512	67,239	138,418	-71,179	205,657	-34.6
Ntcheu	659,608	88,152	137,963	-49,811	226,115	-22.0
Lilongwe City	989,318	587,433	141,434	445,999	728,867	61.2
<b>Southern Region</b>	<b>7,750,629</b>	<b>1,350,911</b>	<b>1,555,927</b>	<b>-205,016</b>	<b>2,906,838</b>	<b>-7.1</b>
Mangochi	1,148,611	163,976	100,175	63,801	264,151	24.2
Machinga	735,438	76,051	111,856	-35,805	187,907	-19.1
Zomba	746,724	117,346	133,622	-16,276	250,968	-6.5
Chiradzulu	356875	37,076	123,009	-85,933	160,085	-53.7
Blantyre	451,220	111,671	111,383	288	223,054	0.1
Mwanza	130,949	17,865	28,703	-10,838	46,568	-23.3
Thyolo	721,456	67,130	169,901	-102,771	237,031	-43.4
Mulanje	684,107	60,237	162,780	-102,543	223,017	-46.0
Phalombe	429,450	22,573	65,480	-42,907	88,053	-48.7
Chikwawa	564,684	54,787	66,811	-12,024	121,598	-9.9
Nsanje	299,168	22,576	67576	-45,000	90,152	-49.9
Balaka	438,379	108,914	98,671	10,243	207,585	4.9
Neno	138,291	31,021	15,613	15,408	46,634	33.0
Zomba City	105,013	54,890	121,607	-66,717	176497	-37.8
Blantyre City	800,264	404,798	178,740	226,058	583,538	38.7

Source: 2018 Malawi Population and Housing Census

**Table A. 2: Percentage Life Time Migration by Region and Districts, Malawi 2018**

Region and District	In migrants	Out migrants	Net migration	Gross migration
<b>Northern Region</b>	<b>19</b>	<b>20</b>	<b>-0.3</b>	<b>39</b>
Chitipa	5	31	-26.6	36
Karonga	10	15	-4.3	25
Nkhata Bay	21	16	5.3	37
Rumphi	19	35	-16.1	54
Mzimba	15	15	0.4	30
Likoma	24	52	-28.1	77
Mzuzu City	64	22	42.4	86
<b>Central Region</b>	<b>19</b>	<b>16</b>	<b>2.8</b>	<b>35</b>
Kasungu	21	15	6.4	36
Nkhotakota	19	14	4.9	34
Ntchisi	11	17	-5.7	28
Dowa	11	19	-7.3	30
Salima	15	15	0.6	30
Lilongwe	10	18	-8.5	27
Mchinji	14	10	3.9	24
Dedza	8	17	-8.6	25
Ntcheu	13	21	-7.6	34
Lilongwe City	59	14	45.1	74
<b>Southern Region</b>	<b>17</b>	<b>20</b>	<b>-2.6</b>	<b>38</b>
Mangochi	14	9	5.6	23
Machinga	10	15	-4.9	26
Zomba	16	18	-2.2	34
Chiradzulu	10	34	-24.1	45
Blantyre	25	25	0.1	49
Mwanza	14	22	-8.3	36
Thyolo	9	24	-14.2	33
Mulanje	9	24	-15.0	33
Phalombe	5	15	-10.0	21
Chikwawa	10	12	-2.1	22
Nsanje	8	23	-15.0	30
Balaka	25	23	2.3	47
Neno	22	11	11.1	34
Zomba City	52	116	-63.5	168
Blantyre City	51	22	28.2	73

Source: 2018 Malawi Population and Housing Census

**Table A. 3: Male Life time migration, Malawi 2018**

District and Region	Total	In	Out	Net	Gross	Effectiveness
<b>Northern Region</b>	<b>218,586</b>	<b>231,992</b>	<b>212,283</b>	<b>19,709</b>	<b>444,275</b>	<b>4.4</b>
Chitipa	5,300	6,560	36,609	-30,049	43,169	-69.6
Karonga	17,645	19,455	26,056	-6,601	45,511	-14.5
Nkhata Bay	31,143	33,932	21,209	12,723	55,141	23.1
Rumphi	20,970	22,283	37,531	-15,248	59,814	-25.5
Mzimba	72,274	76,223	64,434	11,789	140,657	8.4
Likoma	1,830	2,064	3,569	-1,505	5,633	-26.7
Mzuzu City	69,424	71,475	22,875	48,600	94,350	51.5
<b>Central Region</b>	<b>721,355</b>	<b>750,211</b>	<b>600,526</b>	<b>149,685</b>	<b>1,350,737</b>	<b>11.1</b>
Kasungu	90,034	91,826	59,631	32,195	151,457	21.3
Nkhota kota	38,308	39,211	27,799	11,412	67,010	17.0
Ntchisi	16,644	16,778	25,603	-8,825	42,381	-20.8
Dowa	41,564	51,325	69,206	-17,881	120,531	-14.8
Salima	36,565	37,527	35,112	2,415	72,639	3.3
Lilongwe	77,468	79,361	144,066	-64,705	223,427	-29.0
Mchinji	42,413	44,562	28,193	16,369	72,755	22.5
Dedza	34,069	35,625	71,148	-35,523	106,773	-33.3
Ntcheu	45,623	47,638	71,466	-23,828	119,104	-20.0
Lilongwe City	298,667	306,358	68,302	238,056	374,660	63.5
<b>Southern Region</b>	<b>751,162</b>	<b>707,334</b>	<b>808,776</b>	<b>-101,442</b>	<b>1,516,110</b>	<b>-6.7</b>
Mangochi	81,478	87,109	54,461	32,648	141,570	23.1
Machinga	37,140	39,578	60,097	-20,519	99,675	-20.6
Zomba	58,989	60,292	70,456	-10,164	130,748	-7.8
Chiradzulu	20,693	21,041	64,223	-43,182	85,264	-50.6
Blantyre	56,309	57,295	56,384	911	113,679	0.8
Mwanza	9,149	10,283	15,116	-4,833	25,399	-19.0
Thyolo	34,295	35,591	89,821	-54,230	125,412	-43.2
Mulanje	31,248	32,806	89,100	-56,294	121,906	-46.2
Phalombe	12,219	12,906	35,979	-23,073	48,885	-47.2
Chikwawa	27,455	29,028	32,579	-3,551	61,607	-5.8
Nsanje	10,715	11,781	32,816	-21,035	44,597	-47.2
Balaka	52,461	53,769	51,444	2,325	105,213	2.2
Neno	15,729	16,191	7,946	8,245	24,137	34.2
Zomba City	27,214	27,723	61,517	-33,794	89,240	-37.9
Blantyre City	276,068	211,941	86,837	125,104	298,778	41.9

Source: 2018 Malawi Population and Housing Census

**Table A. 4: Female Life time migration, Malawi 2018**

Region and District	Total	In	Out	Net	Gross	Effectiveness
<b>Northern Region</b>	<b>1,175,283</b>	<b>242,246</b>	<b>235,516</b>	<b>6,730</b>	<b>477,762</b>	<b>1.4</b>
Chitipa	120,535	8,264	37,091	-28,827	45,355	-63.6
Karonga	188,831	22,388	27,356	-4,968	49,744	-10.0
Nkhata Bay	145,340	32,616	23,961	8,655	56,577	15.3
Rumphi	116,509	24,286	42,550	-18,264	66,836	-27.3
Mzimba	484,317	77,890	75,323	2,567	153,213	1.7
Likoma	7,327	2,001	4,035	-2,034	6,036	-33.7
Mzuzu City	112,424	74,801	25,200	49,601	100,001	49.6
<b>Central Region</b>	<b>3,843,784</b>	<b>741,753</b>	<b>621,655</b>	<b>120,098</b>	<b>1,363,408</b>	<b>8.8</b>
Kasungu	425,658	92,322	66,302	26,020	158,624	16.4
Nkhotakota	200,462	38,578	28,631	9,947	67,209	14.8
Ntchisi	162,226	19,197	28,211	-9,014	47,408	-19.0
Dowa	394,409	56,036	75,763	-19,727	131,799	-15.0
Salima	246,415	36,642	34,265	2,377	70,907	3.4
Lilongwe	842,155	80,111	150,102	-69,991	230,213	-30.4
Mchinji	305,519	43,827	31,482	12,345	75,309	16.4
Dedza	434,630	34,799	67,270	-32,471	102,069	-31.8
Ntcheu	340,193	44,346	66,497	-22,151	110,843	-20.0
Lilongwe City	492,117	295,895	73,132	222,763	369,027	60.4
<b>Southern Region</b>	<b>4,023,222</b>	<b>696,367</b>	<b>882,936</b>	<b>-186,569</b>	<b>1,579,303</b>	<b>-11.8</b>
Mangochi	603,111	88,906	45,714	43,192	134,620	32.1
Machinga	384,696	41,651	51,759	-10,108	93,410	-10.8
Zomba	390,006	59,816	63,166	-3,350	122,982	-2.7
Chiradzulu	187,196	16,842	58,786	-41,944	75,628	-55.5
Blantyre	232,756	56,433	54,999	1,434	111,432	1.3
Mwanza	67,415	9,753	71,132	-61,379	80,885	-75.9
Thyolo	380,697	33,928	80,080	-46,152	114,008	-40.5
Mulanje	358,992	30,197	73,680	-43,483	103,877	-41.9
Phalombe	222,444	10,975	29,501	-18,526	40,476	-45.8
Chikwawa	287,794	28,964	34,232	-5,268	63,196	-8.3
Nsanje	155,590	13,253	34,760	-21,507	48,013	-44.8
Balaka	229,105	58,096	47,227	10,869	105,323	10.3
Neno	70,934	15,744	61,070	-45,326	76,814	-59.0
Zomba City	53,394	28,230	84,927	-56,697	113,157	-50.1
Blantyre City	399,092	203,579	91,903	111,676	295,482	1.4

Source: 2018 Malawi Population and Housing Census

**Table A. 5: Top 30 current migration streams, Malawi 2018**

Thyolo- Blantyre City	55,990
Mulanje -Blantyre City	46,738
Mzimba –Mzuzu	46,621
Dedza- Lilongwe City	46,000
Dowa- Kasungu	44,660
Chiradzulu -Blantyre City	44,012
Ntcheu -Lilongwe City	43,141
Blantyre City-Lilongwe City	42,470
Zomba City - Zomba Rural	41,062
Blantyre City -Blantyre Rural	39,557
Blantyre Rural -Blantyre City	38,252
Lilongwe City -Lilongwe Rural	37,358
Lilongwe Rural - Kasungu	37,276
Lilongwe Rural -Mchinji	32,192
Rumphu Mzimba	29,620
Dowa - Lilongwe City	28,058
Ntcheu Blantyre City	26,258
Thyolo -Lilongwe City	25,668
Machinga Balaka	25,613
Lilongwe Rural - Dowa	25,443
Zomba Rural -Machinga	23,292
Kasungu Lilongwe City	22,646
Kasungu Mzimba	22,277
Mangochi -Lilongwe City	20,972
Balaka Lilongwe City	20,856
Lilongwe Rural-Dedza	20,704
Zomba City-Blantyre City	20,573
Zomba Rural -Blantyre City	20,034
Mulanje -Lilongwe City	19,197
Dedza Lilongwe Rural	18,893

Source: 2018 Malawi Population and Housing Census

**Table A. 6: Current migration by district, Malawi 2018**

District	Total	In Migrants	Out Migrants	Net	Gross	Effectiveness
Chitipa	228,614	3,446	9,624	-6,178	13,070	-47.3
Karonga	355,109	5,037	7,163	-2126	12,200	-17.4
Nkhata Bay	276,541	7,297	6,415	882	13,712	6.4
Rumphi	222,658	10,070	8,257	1813	18,327	9.9
Mzimba	913,052	23,245	14,714	8531	37,959	22.5
Likoma	14,219	688	709	-21	1,397	-1.5
Mzuzu City	215,838	12,385	14,457	-2072	26,842	-7.7
Kasungu	818,770	16,365	18,193	-1828	34,558	-5.3
Nkhotakota	380,312	6,785	8,198	-1413	14,983	-9.4
Ntchisi	307,574	5,720	4,989	731	10,709	6.8
Dowa	751,214	13,765	13,089	676	26,854	2.5
Salima	462,585	6,147	8,513	-2366	14,660	-16.1
Lilongwe	1,587,942	17,745	26,062	-8317	43,807	-19
Mchinji	585,291	7,218	7,472	-254	14,690	-1.7
Dedza	805,961	8,800	10,441	-1641	19,241	-8.5
Ntcheu	640,574	13,279	10,828	2451	24,107	10.2
Lilongwe City	961,450	41,888	33,443	8445	75,331	11.2
Mangochi	1,106,692	14,626	12,936	1690	27,562	6.1
Machinga	710,201	9,859	7,836	2023	17,695	11.4
Zomba	724,954	13,665	11,356	2309	25,021	9.2
Chiradzulu	347,377	6,206	6,668	-462	12,874	-3.6
Blantyre	438,569	8,337	16,323	-7986	24,660	-32.4
Mwanza	127,231	2,109	2,588	-479	4,697	-10.2
Thyolo	702,148	15,094	11,457	3637	26,551	13.7
Mulanje	664,106	12,424	10,762	1662	23,186	7.2
Phalombe	416,253	4,838	4,788	50	9,626	0.5
Chikwawa	546,511	4,017	5,886	-1869	9,903	-18.9
Nsanje	289,758	3,015	3,447	-432	6,462	-6.7
Balaka	424,739	10,340	8,773	1567	19,113	8.2
Neno	133,872	2,791	1,878	913	4,669	19.6
Zomba City	102,355	6,961	8,615	-1654	15,576	-10.6
Blantyre City	778,477	30,374	28,656	1718	59,030	2.9

Source: 2018 Malawi Population and Housing Census

**Table A. 7: Male Current migration by district, Malawi 2018**

District	Total	In	Out	Net	Gross	Effectiveness
Chitipa	111,231	2,518	4,732	-2,214	7,250	-30.5
Karonga	171,406	3,016	3,536	-520	6,552	-7.9
Nkhata Bay	135,340	4,798	3,359	1,439	8,157	17.6
Rumphi	109,546	5489	4,181	1,308	9,670	13.5
Mzimba	442,433	17,055	7,296	9,759	24,351	40.1
Likoma	7,051	400	376	24	776	3.1
Mzuzu City	106,159	6,501	7,624	-1,123	14,125	-8.0
Kasungu	405,399	9,350	9,293	57	18,643	0.3
Nkhotakota	186,319	4,062	4,378	-316	8,440	-3.7
Ntchisi	150,131	3,019	2,560	459	5,579	8.2
Dowa	367,538	8,036	6,704	1,332	14740	9.0
Salima	223,961	3,804	4,508	-704	8,312	-8.5
Lilongwe	770,940	11,507	13,397	-1,890	24,904	-7.6
Mchinji	288,486	4,706	3,731	975	8,437	11.6
Dedza	383,811	6,521	5,511	1,010	12,032	8.4
Ntcheu	309,919	8,604	5,447	3,157	14,051	22.5
Lilongwe City	483,284	22,387	17,949	4,438	40,336	11.0
Mangochi	524,846	12,126	7,087	5,039	19,213	26.2
Machinga	338,201	8,662	4,030	4,632	12,692	36.5
Zomba	345,859	8,365	5,749	2,616	14,114	18.5
Chiradzulu	164,992	3,812	3,317	495	7,129	6.9
Blantyre	212,181	5,046	8,368	-3,322	13,414	-24.8
Mwanza	61,734	1,565	61,545	-59,980	63,110	-95.0
Thyolo	331,087	9,821	5,756	4,065	15,577	26.1
Mulanje	315,078	8,187	5,360	2,827	13,547	20.9
Phalombe	200,413	3,624	2,429	1,195	6,053	19.7
Chikwawa	267,933	2,942	3,020	-78	5,962	-1.3
Nsanje	138,906	2,600	1,735	865	4,335	20.0
Balaka	202,529	6,406	4,298	2,108	10,704	19.7
Neno	65,161	1,818	64,280	-62,462	66,098	-94.5
Zomba City	50,277	3,734	50,969	-47,235	54,703	-86.3
Blantyre City	390,344	16,351	15,181	1,170	31,532	3.7

Source: 2018 Malawi Population and Housing Census

**Table A. 8: Female Current migration by district, Malawi 2018**

District	Total	In	Out	Net	Gross	Effectiveness
Chitipa	117,383	1,930	4,892	-2,962	6,822	-43.4
Karonga	183,703	2,834	3,627	-793	6,461	-12.3
Nkhata Bay	141,201	4,407	3,056	1,351	7,463	18.1
Rumphi	113,112	5,296	4,076	1,220	9,372	13.0
Mzimba	470,619	13,440	7,418	6,022	20,858	28.9
Likoma	7,168	357	333	24	690	3.5
Mzuzu City	109,679	6,871	6,833	38	13,704	0.3
Kasungu	413,371	8,308	8900	-592	17,208	-3.4
Nkhotakota	193,993	3,455	3,820	-365	7,275	-5.0
Ntchisi	157,443	2,825	2429	396	5,254	7.5
Dowa	383,676	7,332	6,385	947	13,717	6.9
Salima	238,624	3,039	4,005	-966	7,044	-13.7
Lilongwe	817,002	9,790	12,665	-2,875	22,455	-12.8
Mchinji	296,805	4,078	3,741	337	7,819	4.3
Dedza	422,150	4,755	4,930	-175	9,685	-1.8
Ntcheu	330,655	6,284	5,381	903	11,665	7.7
Lilongwe City	478,166	22,392	15,494	6,898	37,886	18.2
Mangochi	581,846	8,388	5,849	2,539	14,237	17.8
Machinga	372,000	5,256	3,806	1,450	9,062	16.0
Zomba	379,095	6,800	5,607	1,193	12,407	9.6
Chiradzulu	182,385	2,871	3,351	-480	6,222	-7.7
Blantyre	226,388	4,173	7,955	-3,782	12,128	-31.2
Mwanza	65,497	1,103	65,546	-64,443	66,649	-96.7
Thyolo	371,061	7,405	5,701	1,704	13,106	13.0
Mulanje	349,028	6,246	5,402	844	11,648	7.2
Phalombe	215,840	2,549	2,359	190	4,908	3.9
Chikwawa	278,578	2,090	2,866	-776	4,956	-15.7
Nsanje	150,852	1,565	1,712	-147	3,277	-4.5
Balaka	222,210	5,207	4,475	732	9682	7.6
Neno	68,711	1,361	68,106	-66,745	69,467	-96.1
Zomba City	52,078	3,742	52,476	-48,734	56,218	-86.7
Blantyre City	388,133	16,824	13,475	3,349	30,299	11.1

Source: 2018 Malawi Population and Housing Census

**Table A. 9: Lifetime Migration streams and counter streams, Malawi 2018**

Main Stream	Volume	Counter Stream	Volume
Chitipa Karonga	11,537	Karonga-Chitipa	2,862
Chitipa-Mzuzu	11,098	Mzuzu Chitipa	1,227
Karonga Mzuzu city	10,334	Mzuzu City Karonga	2,297
Karonga Lilongwe City	8,020	Lilongwe City Karonga	1,544
Nkhata Bay Mzuzu City	11,934	Mzuzu City Nkhata Bay	9,577
Rumphi Mzimba	29,620	Mzimba Rumphi	10,874
Rumphi Mzuzu	15,071	Mzuzu Rumphi	2,884
Mzimba Mzuzu	46,621	Mzuzu Mzimba	10,538
Mzimba Kasungu	15,034	Kasungu Mzimba	22,227
Mzimba Lilongwe City	16,501	Lilongwe City Mzimba	45,561
Mzimba Blantyre City	6,180	Blantyre City Mzimba	2,377
Likoma Nkhota kota	1,028	Nkhota kota Likoma	824
Mzuzu Lilongwe	6,841	Lilongwe Mzuzu	6,011
Mzuzu Blantyre City	3,054	Blantyre City Mzuzu	5,148
Kasungu Mzimba	22,277	Mzimba Kasungu	15,035
Kasungu Dowa	12,671	Dowa Kasungu	44,660
Kasungu Lilongwe Rural	10,579	Lilongwe Rural Kasungu	37,276
Kasungu Lilongwe City	22,646	Lilongwe City Kasungu	6,150
Kasungu Mchinji	9,973	Mchinji Kasungu	10,989
Nkhotakota Lilongwe City	10,387	Lilongwe City Nkhotakota	2,496
Ntchisi Kasungu	14,039	Kasungu Ntchisi	6,234
Ntchisi Dowa	10,968	Dowa Ntchisi	11,174
Ntchisi Lilongwe City	7,164	Lilongwe City Ntchisi	18,858
Dowa Kasungu	44,660	Kasungu Dowa	12,671
Dowa Lilongwe Rural	18,665	Lilongwe Rural Dowa	25,443
Dowa - Lilongwe City	28,058	Lilongwe City - Dowa	5,952
Salima - Dowa	8,686	Dowa - Salima	8,186
Salima - Lilongwe City	17,980	Lilongwe City - Salima	4,913
Lilongwe Rural - Kasungu	37,276	Kasungu - Lilongwe Rural	10,579
Lilongwe Rural - Dowa	25,443	Dowa - Lilongwe Rural	18,665
Lilongwe Rural -Mchinji	32,192	Mchinji-Lilongwe Rural	11,435
Lilongwe Rural-Dedza	20,704	Dedza-Lilongwe Rural	18,893
Lilongwe Rural-Lilongwe City	12,000	Lilongwe City -Lilongwe Rural	37,358
Mchinji-Kasungu	10,989	Kasungu-Mchinji	9,973
Mchinji-Lilongwe Rural	4,433	Lilongwe Rural -Mchinji	32,192
Mchinji Lilongwe City	14,938	Lilongwe City Mchinji	5,142
Dedza -Kasugu	10,851	Kasungu-Dedza	3,096

<b>Main Stream</b>	<b>Volume</b>	<b>Counter Stream</b>	<b>Volume</b>
Dedza Lilongwe Rural	18893	Lilongwe Rural Dedza	20,704
Dedza Lilongwe City	46000	Lilongwe City Dedza	7,352
Dedza Ntcheu	12328	Ntcheu Dedza	5,913
Ntcheu Lilongwe Rural	6393	Lilongwe Rural Ntcheu	3581
Ntcheu -Lilongwe City	43141	Lilongwe City Ntcheu	7,877
Ntcheu -Mangochi	11481	Mangochi Ntcheu	4,851
Ntcheu Blantyre City	26258	Blantyre City Ntcheu	8,294
Lilongwe City -Lilongwe Rural	37358	Lilongwe Rural To Lilongwe City	120,909
Lilongwe City - Blantyre City	14864	Blantyre City To Lilongwe City	424,790
Mangochi -Lilongwe City	20972	Lilongwe City Mangochi	6,989
Mangochi - Machinga	10969	Machinga-Mangochi	28,131
Mangochi Blantyre City	12878	Blantyre City Mangochi	6,948
Machinga Lilongwe City	12004	Lilongwe City Machinga	2,342
Machinga Balaka	25613	Balaka Machinga	4,885
Machinga Blantyre City	9499	Blantyre City Machinga	9,499
Zomba Rural To Lilongwe City	16890	Lilongwe City To Zomba Rural	3,562
Zomba Rural To Mangochi	11403	Mangochi - Zomba Rural	3,596
Zomba Rural -Machinga	23292	Machinga-Zomba Rural	8,942
Zomba Rural -Zomba City	14920	Zomba City To Zomba Rural	41,062
Zomba Rural -Blantyre City	20034	Blantyre City To Zomba Rural	8,277
Chiradzulu Lilongwe City	13083	Lilongwe City Chiradzulu	1,079
Chiradzulu -Zomba Rural	14738	Zomba City -Chiradzulu	3,858
Chiradzulu Mulanje	10011	Mulanje Chiradzulu	7,452
Chiradzulu Blantyre City	44012	Blantyre City -Chiradzulu	5,296
Lilongwe City -Blantyre Rural	18744	Blantyre Rural To Lilongwe City	12,903
Blantyre Rural To Blantyre City	38252	Blantyre City To Blantyre Rural	39,557
Mwanza-Neno	6846	Neno-Mwanza	1,982
Mwanza -Blantyre City	4893	Blantyre City -Mwanza	7,542
Thyolo -Lilongwe City	25668	Lilongwe City -Thyolo	2,155
Thyolo -Mangochi	12737	Mangochi--Thyolo	1,451
Thyolo- Blantyre City	55990	Blantyre City To Thyolo	2,171
Mulanje -Lilongwe City	19197	Lilongwe City Mulanje	1,797
Mulanje -Mangochi	12191	Mangochi Mulanje	1,141

<b>Main Stream</b>	<b>Volume</b>	<b>Counter Stream</b>	<b>Volume</b>
Mulanje Blantyre City	46738	Blantyre City Mulanje	6,044
Phalombe Mulanje	13377	Mulanje -Phalombe	6,969
Phalombe -Blantyre City	11488	Blantyre City Phalombe	1,308
Chikwawa-Blantyre City	15862	Blantyre City -Chikwawa	4,028
Nsanje -Chikwawa	17646	Chikwawa-Nsanje	7,715
Nsanje - Blantyre City	14096	Blantyre City Nsanje	1,843
Balaka Ntcheu	14322	Ntcheu-Balaka	3,755
Balaka Lilongwe City	20856	Lilongwe City -Balaka	4,759
Balaka Mangochi	14239	Mangochi Balaka	8,662
Balaka Blantyre	16689	Blantyre City Balaka	8,483
Neno Blantyre City	3585	Blantyre City Neno	3,104
Zomba City -Lilongwe City	18744	Lilongwe City Zomba City	3357
Zomba City - Zomba Rural	41062	Zomba Rural -Zomba City	14,920
Zomba City-Blantyre City	20573	Blantyre City -Zomba City	49060
Blantyre City-Lilongwe City	42470	Lilongwe City -Blantyre City	14,866
Blantyre City -Blantyre Rural	39557	Blantyre Rural-Blantyre City	38,252

*Source: 2018 Malawi Population and Housing Census*

## **REPORT AUTHORS**

### **Name**

Dr Cecilia Makupe  
Grevazio Kapaswiche  
George Mandere

### **Organisation**

Department of Population Studies-University of Malawi  
National Statistical Office  
Department of Population Studies-University of Malawi

## **REPORT REVIEWERS**

### **Name**

Mercy Kanyuka  
Jameson Ndawala  
Isaac Chirwa  
Medson Makwemba  
Richard Phiri

### **Organisation**

National Statistical Office  
National Statistical Office  
National Statistical Office  
National Statistical Office  
National Statistical Office

National Statistical Office

P.O. Box 333

Zomba

Telephone: +265 1 524 377/111

Fax: +265 1 525 130

Email: [enquiries@nso.gov.mw](mailto:enquiries@nso.gov.mw)

[demography@nso.gov.mw](mailto:demography@nso.gov.mw)

Website: [www.nsomalawi.mw](http://www.nsomalawi.mw)



**USAID**  
FROM THE AMERICAN PEOPLE

